

REVISION RECORD				
REV	ECN	DESCRIPTION	DRFT	DATE
A0		NEW		21.9.3

SPECIFICATIONS

Rated(额定参数): 300V,12A
 Dielectric strength(抗电强度): AC2000V/1 Minute
 Insulation Resistance(绝缘电阻):1000MΩ Min
 Contact Resistance(接触电阻):20mΩ Max
 Screw Torque(扭矩): 0.5Nm (4.4Lb.in)
 Wire Range(线径):14~22AWG
 Strip length(剥线长度):4.5~5mm
 Temp. range(操作温度): -40℃~+105℃
 MAX Soldering(瞬时温度):+250℃,5s

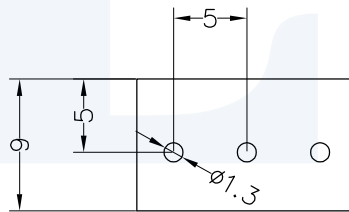
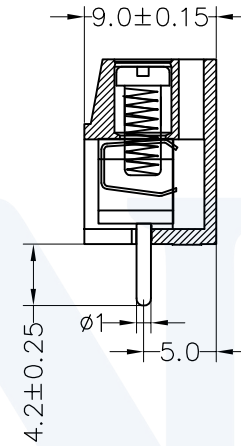
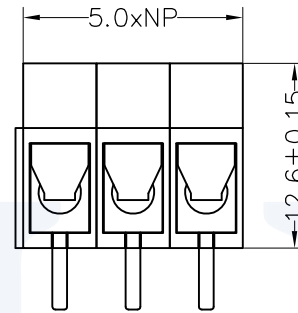
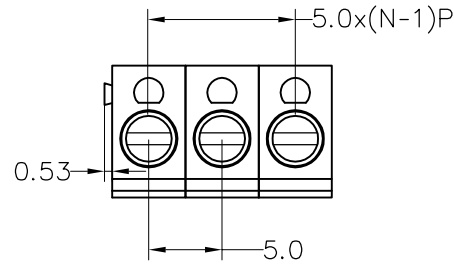
Housing Material(塑件): PA66 (UL94 V-0)
 Contact(端子): Brass, Tin plating(黄铜镀锡)
 Wire protector(弹片): Bronze(磷铜), Ni plating(镀镍)
 Screw(螺丝): M3.0, Steel, Zinc plating(钢,镀锌)

PITCH RANGE IN MM			NOMINAL DIMENSION RANGE IN MM				
TO	OVER	OVER	TO	OVER	OVER	OVER	OVER
6	6 TO 10	10 TO 24	30	30 TO 60	60 TO 100	100 TO 150	150
±0.10	±0.15	±0.25	±0.30	±0.30	±0.50	±0.70	±1.00

Ordering Information

JL 300 - 500 XX U X 1

- Pitch 500=5.0PH
- No.of pins 2P,3P,4P~24P
- Housing Color B=Black, G=Green, U=Blue, R=Red, W=White, Y=Yellow, O=Orange, E=Grey
- Packing 0=Pe bag, T=Tube, A=Tray



Recommended P.C.B Layout(Top Side)

DRAW	SHUANGPING ZHENG	SCALE	FIT	JILN[®] 东莞市锦凌电子有限公司 DONGGUAN JINLING ELECTRONIC CO.,LTD
		UNIT	mm	
CHECK	LICHAO LIU	SIZE	A4	
		SHEET	1/1	
APPROVE	YONGLIANG GAO	PROJ.	PART NO. JL300-500XXUX1 TITLE: JL300-5.00-XXP螺钉式端子台/蓝色	